

Технические характеристики

По вопросам продаж и поддержки обращайтесь:

Алматы (7273)495-231	Казань (843)206-01-48	Новокузнецк (3843)20-46-81	Смоленск (4812)29-41-54
Архангельск (8182)63-90-72	Калининград (4012)72-03-81	Новосибирск (383)227-86-73	Сочи (862)225-72-31
Астрахань (8512)99-46-04	Калуга (4842)92-23-67	Омск (3812)21-46-40	Ставрополь (8652)20-65-13
Барнаул (3852)73-04-60	Кемерово (3842)65-04-62	Орел (4862)44-53-42	Сургут (3462)77-98-35
Белгород (4722)40-23-64	Киров (8332)68-02-04	Оренбург (3532)37-68-04	Тверь (4822)63-31-35
Брянск (4832)59-03-52	Краснодар (861)203-40-90	Пенза (8412)22-31-16	Томск (3822)98-41-53
Владивосток (423)249-28-31	Красноярск (391)204-63-61	Пермь (342)205-81-47	Тула (4872)74-02-29
Волгоград (844)278-03-48	Курск (4712)77-13-04	Ростов-на-Дону (863)308-18-15	Тюмень (3452)66-21-18
Вологда (8172)26-41-59	Липецк (4742)52-20-81	Рязань (4912)46-61-64	Ульяновск (8422)24-23-59
Воронеж (473)204-51-73	Магнитогорск (3519)55-03-13	Самара (846)206-03-16	Уфа (347)229-48-12
Екатеринбург (343)384-55-89	Москва (495)268-04-70	Санкт-Петербург (812)309-46-40	Хабаровск (4212)92-98-04
Иваново (4932)77-34-06	Мурманск (8152)59-64-93	Саратов (845)249-38-78	Челябинск (351)202-03-61
Ижевск (3412)26-03-58	Набережные Челны (8552)20-53-41	Севастополь (8692)22-31-93	Череповец (8202)49-02-64
Иркутск (395)279-98-46	Нижний Новгород (831)429-08-12	Симферополь (3652)67-13-56	Ярославль (4852)69-52-93
Россия (495)268-04-70	Киргизия (996)312-96-26-47	Казахстан (7172)727-132	



Straight Sight glass

Applications

◆Straight Sight glass is comprised of stainless steel frame and tempered glass. Through it, operator can observe the flowing of the media clearly and precisely in the fields of food, cosmetics, pharmaceutical and fine chemicals industries.

Technical specifications

- ◆Size : DN25/1"-DN150/6"
- ◆Full port design
- ◆Grid-like protective cover
- ◆Can be used vertically or horizontally
- ◆Working temperature : -10°C-130°C
- ◆Max pressure:10bar
- ◆Connections: Clamp, weld, thread, DIN SMS RJT ISO IDF ASME BPE DIN 11864



Straight Sight glasses

Applications

◆Straight Sight glass is comprised of stainless steel frame and tempered glass. Through it, operator can observe the flowing of the liquid substance clearly and precisely in the fields of food, cosmetics, pharmaceutical and fine chemicals industries.

Technical specifications

- ◆Size : DN25/1"-DN150/6"
- ◆Full bore design
- ◆Grid-like protective cover
- ◆Can be used vertically or horizontally
- ◆Working temperature : -10°C-130°C
- ◆Max pressure:10bar
- ◆Connections : Clamp, weld, thread, DIN SMS RJT ISO IDF ASME BPE DIN 11864



Direct sight glasses with Protective cover

Applications

◆Straight Sight glass is comprised of stainless steel frame and tempered glass. Through it, operator can observe the flowing of the media clearly and precisely in the fields of food, cosmetics, pharmaceutical and fine chemicals industries.

Technical specifications

- ◆Size : DN25/1"-DN150/6"
- ◆Full-port design
- ◆Grid-like protective cover
- ◆Can be used vertically or horizontally
- ◆Working temperature : -10°C-130°C
- ◆Max pressure:10bar
- ◆Connections : Clamp, weld, thread, DIN SMS RJT ISO IDF ASME BPE DIN 11864



Four-way sight glass

Applications

Four-way sight glass is comprised of stainless steel frame, tempered glass and lamp. Through it, operator can observe the flowing of the media clearly and precisely in the fields of food cosmetics, pharmaceutical and fine chemicals industries.

Technical specifications

- Size from 1"-4" to DN25-DN100
- Connections: thread, clamp, weld, DIN, SMS, IDF
- Gasket material : EPDM NBR in accordance with FDA 177.2600
- material : AISI 304(1.4301) AISI 316L(1.4404)
- Max. temperature : -10°C-130°C

Function options

- Wireless power supply, one charging can use 2-3 months (Depending on the frequency)
- Cable power supply AC110V-220V , one charging can use 2-3 months (Depending on the frequency)
- All stainless steel mirror lamp DC24V power supply
- No retention, zero dead angle, high light, white cold light source, waterproof, explosion-proof



Flange sight glasses

Applications

◆ Flange sight glasses are comprised of stainless steel frames and tempered glass. Through them, operators can observe the flow of media clearly and precisely in the fields of food, cosmetics, pharmaceutical, and fine chemicals industries.

Technical specifications

- ◆ Size from 1.5"-8"-DN40-DN200
- ◆ Assemble flange with glass by using hexagonal socket bolts
- ◆ Gasket material : PTFE in accordance with FAD 177.1600
- ◆ Material : AISI 304(1.4301) AISI 316L(1.4404)
- ◆ Max. Temperature : -10°C-130°C
- ◆ Max. Pressure : 10bar

Function Options

- Wireless power supply, one charging can use 2-3 months (Depending on the frequency)
- Cable power supply AC110V-220V , one charging can use 2-3 months (Depending on the frequency)
- Cable power supply DC24V
- No retention, zero dead angle, high light, white cold light source, waterproof, explosion-proof



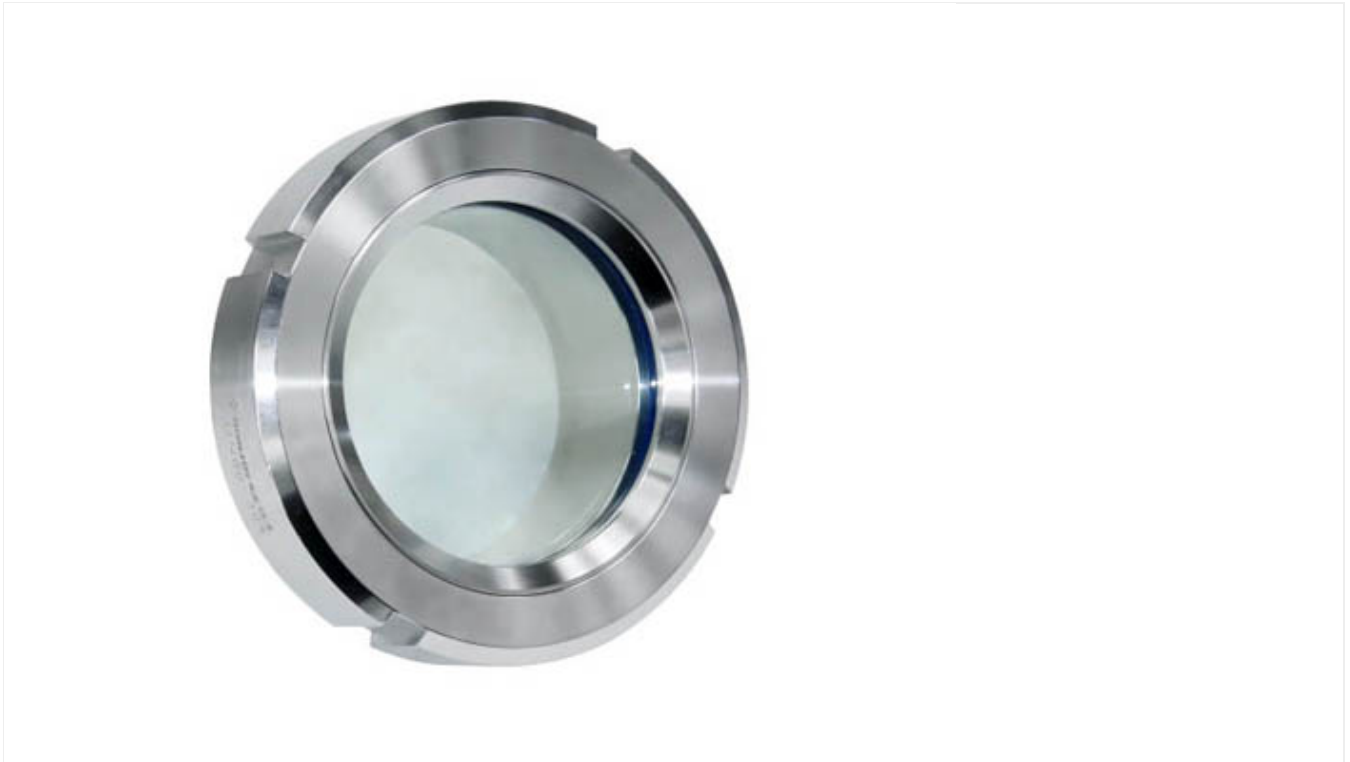
Clamp Union sight glass

Applications

- ◆It is used viewing the biologic reactor, blender in laboratory, fitter, processing container, pipeline and other closed container. Especially apply in pharmacy, food and beverage processing, such as the brewery, dairy.
- ◆Dust scraping device mainly solves glass transparency decreases in the media because of the glass is immersed in a medium for a long time.
- ◆The main structure: nuts and clamp connections in two designs, with a circular transparent glass.

Technical specifications

- ◆Gasket ring : EPDM FPM, FDA177.2600
- ◆The parts contact with medium : 1.4301(304) ; 1.4404(316L)
- ◆Pressure : Vacuum-10bar
- ◆Temperature : -10°C / 130°C
- ◆Size : 2"-DN50-6"-DN150



Union sight glass

Applications

- ◆The main structure: nuts and clamp connections in two designs, with a circular transparent tempered glass.
- ◆It is used viewing the biologic reactor, blender in laboratory, fitter, processing container, pipeline and other closed container. Especially apply in pharmacy, food and beverage processing, such as the brewery, dairy.
- ◆Dust scraping device mainly solves glass transparency decreases because of glass is immersed in the medium for a long time

Technical specifications

- ◆Gasket ring : EPDM FPM, FDA177.2600
- ◆The parts contact with medium : 1.4301(304) ; 1.4404(316L)
- ◆Pressure : Vacuum-10bar
- ◆Temperature : -10°C / 130°C
- ◆Size : 2"-DN50-6"-DN150

Function Options

- Standard type+Wireless power supply, one charging can use 2-3 months (Depending on the frequency)
- Standard type+Cable power supply AC110V-220V , one charging can use 2-3 months (Depending on the frequency)
- Standard type+All stainless steel mirror lamp DC24V power supply
- No retention, zero dead angle, high light, white cold light source, waterproof, explosion-proof



Union sight glass with Dust scraping device

Applications

- ◆Dust scraping device mainly solves glass transparency decreases because of glass is immersed in the medium for a long time
- ◆The main structure: nuts and clamp connections in two designs, with a circular transparent glass.
- ◆It is used viewing the biologic reactor, blender in laboratory, fitter, processing container, pipeline and other closed container. Especially apply in pharmacy, food and beverage processing, such as the brewery, dairy.

Technical specifications

- ◆Gasket ring : EPDM FPM, FDA177.2600
- ◆The parts contact with liquid : 1.4301(304) ; 1.4404(316L)
- ◆Pressure : Vacuum-10bar
- ◆Temperature : -10°C / 130°C
- ◆Size : 2"-DN50-6"-DN150

Function Options

- Standard type+Wireless power supply, one charging can use 2-3 months (Depending on the frequency)
- Standard type+Cable power supply AC110V-220V , one charging can use 2-3 months (Depending on the frequency)
- Standard type+All stainless steel mirror lamp DC24V power supply
- No retention, zero dead angle, high light, white cold light source, waterproof, explosion-proof

По вопросам продаж и поддержки обращайтесь:

Алматы (7273)495-231	Казань (843)206-01-48	Новокузнецк (3843)20-46-81	Смоленск (4812)29-41-54
Архангельск (8182)63-90-72	Калининград (4012)72-03-81	Новосибирск (383)227-86-73	Сочи (862)225-72-31
Астрахань (8512)99-46-04	Калуга (4842)92-23-67	Омск (3812)21-46-40	Ставрополь (8652)20-65-13
Барнаул (3852)73-04-60	Кемерово (3842)65-04-62	Орел (4862)44-53-42	Сургут (3462)77-98-35
Белгород (4722)40-23-64	Киров (8332)68-02-04	Оренбург (3532)37-68-04	Тверь (4822)63-31-35
Брянск (4832)59-03-52	Краснодар (861)203-40-90	Пенза (8412)22-31-16	Томск (3822)98-41-53
Владивосток (423)249-28-31	Красноярск (391)204-63-61	Пермь (342)205-81-47	Тула (4872)74-02-29
Волгоград (844)278-03-48	Курск (4712)77-13-04	Ростов-на-Дону (863)308-18-15	Тюмень (3452)66-21-18
Вологда (8172)26-41-59	Липецк (4742)52-20-81	Рязань (4912)46-61-64	Ульяновск (8422)24-23-59
Воронеж (473)204-51-73	Магнитогорск (3519)55-03-13	Самара (846)206-03-16	Уфа (347)229-48-12
Екатеринбург (343)384-55-89	Москва (495)268-04-70	Санкт-Петербург (812)309-46-40	Хабаровск (4212)92-98-04
Иваново (4932)77-34-06	Мурманск (8152)59-64-93	Саратов (845)249-38-78	Челябинск (351)202-03-61
Ижевск (3412)26-03-58	Набережные Челны (8552)20-53-41	Севастополь (8692)22-31-93	Череповец (8202)49-02-64
Иркутск (395)279-98-46	Нижний Новгород (831)429-08-12	Симферополь (3652)67-13-56	Ярославль (4852)69-52-93
Россия (495)268-04-70	Киргизия (996)312-96-26-47	Казахстан (7172)727-132	